
PRE-QUALIFICATION DOCUMENTS



POWERTECH

مصنع تكنولوجيا الطاقة لتشكيل المعادن

POWER TECH. FOR METAL FABRICATIONS

P.O. Box: 11983, Jubail Industrial City 31961

Kingdom of Saudi Arabia

Tel: 013 341 0300 | Fax: 013 342 1050

E-mail: info@powertech.com.sa | Website: www.powertech.com.sa

ISO 9001 - 2015

ISO 14001-2015

ISO 45001-2018

Certified



American Welding Society®

Supporting Company Member



COMPANY PROFILE

POWERTECH is 100% Saudi owned company established to serve the requirements of a wide range of industrial projects, meet the increased global demand and furnish specialized support to heavy process plants in all GCC countries, especially in Saudi Arabia.

POWERTECH has a present work force of about 300 professionals and highly skilled technicians in KSA having extensive capabilities and experience.

Our production capacity is approximately 18,000 Metric Tons per year. The fabrication capacity of tonnage for the individual line of activity is outlined hereunder:

- **Structural Steel Fabrication (heavy, medium and light) with capacity of 7,400 MT/Year.**

- ✓ Industrial Projects
- ✓ Power plants, water desalination plants, oil & gas sector, Petro-chemical plants.

- **Shop fabricated and Field erected tank with capacity of 6,000 MT/Year.**

- ✓ Diameter up to 100m and wall thickness up to 60mm
- ✓ Tank repair and associated maintenance

- **Other Fabrication Works of process steel equipment with capacity of 4,600 MT/Year.**

- ✓ Mechanical process equipment.
- ✓ Columns, Silos, Heat Exchangers, Ducts, chutes, hoppers, bins, filters, stack, etc.
- ✓ Storage tanks
- ✓ Pressure vessels and pipe fabrication
- ✓ Chemical Injection Skids.

With our highly qualified, specialized, and experienced team, the company has a solid foundation of practical engineering, backed by an advanced technology, and the latest fully automated manufacturing process, including the most advanced machines in the world.

In order to have a closer look at our plant operations and to have a complete appreciation of our system, it is our pleasure to invite you to visit our premises at 3rd Support Industrial Area, Jubail Industrial City, K.S.A.



VISION

To be the leading provider of products and services to a diversified range of key industries, to contribute to the economic development and quality of life in the Kingdom. To be a technically competitive, attending to the client's needs in a qualitative, cost conscious and time bound manner.

MISSION

- Perform high quality services that is immediate, reliable, and result oriented.
- Promote new technologies.
- To maintain the highest level of standards and ethics in all our business relationships.

LINE OF SERVICES

POWERTECH is offering and serving the main stream and downstream industry related to oil, gas, petrochemical, chemical, fertilizer, power and desalination as well as all support industry with a wide range of product and services that are meeting all international and local industry standards and client satisfaction. This includes but not limited to below:

- Design, fabrication and erection of Steel Tanks, Pressure Vessels, Columns, Silos & Heat Exchangers
- Design, fabrication and erection of Industrial Piping.
- Design, fabrication and erection of Steel Structures.
- Plant Shutdown and Maintenance work.
- Piping and Pipe Line fabrication and site erection.
- Managing and Handling EPC projects.

QUALITY POLICY

POWERTECH is committed to:

- Providing customers with quality products and services which meet requirements and are fit for their purpose.
- Operating the business to the requirements of Quality Management System.
- Enhancing the skills of management and staff through review and actively pursuing an on-going training policy, the objective of which is to prepare staff to perform their work more effectively.
- Promoting the culture of continual quality improvements and the philosophy of getting things "right first time every time".
- Controlling and continuously monitoring the processes of all projects undertaken.
- Promoting the quality management systems and ensuring implementation is achieved by internal auditing, management review, corrective and preventive action.



ISO 9001:2015 CERTIFICATE



CERTIFICATE

*This is to Certify that the
Quality Management System of*

Power Tech for Metal Fabrications (POWERTECH)

P.O Box 11983, Jubail Industrial City, Jubail 31961, Kingdom of Saudi Arabia

has been found to comply with

ISO 9001:2015

This certificate is applicable to the following scope:

Design, Engineering, Procurement, Construction, Installation and
Maintenance of Mechanical works.

IAF Code: 28

Certificate No :: BQSC202106004

<i>Date of Initial Registration</i>	<i>02nd June 2021</i>
<i>Surveillance Audit on/Before</i>	<i>02nd May 2022</i>
<i>Certificate Expiry</i>	<i>01st June 2022</i>
<i>Recertification Due</i>	<i>01st June 2024</i>




Authorized Signatory
BQC ASSESSMENT PRIVATE LIMITED
Website: www.bqcert.com, E-mail: info@bqcert.com.

MANAGEMENT SYSTEM CERTIFICATE

BQC Assessment Pvt. Ltd. is accredited by International Accreditation Services (IAS), United States of America vide MSCB Number 124. Accreditation details are available with IAS, (International Accreditation Service) Inc. USA, at www.iasonline.org. The validity of this certificate can be verified at www.bqcert.com or through info@bqcert.com. Pfr: +91 9810618108, 202, DLF Galleria, Mayur Vihar, Delhi - 110091. This certificate is the property of BQC Assessment Pvt. Ltd. and must be returned on request.



HEALTH, SAFETY AND ENVIRONMENT POLICY

Health, Safety & Environment (HSE) is our value and an integral part of our business.

Towards this objective, we shall:

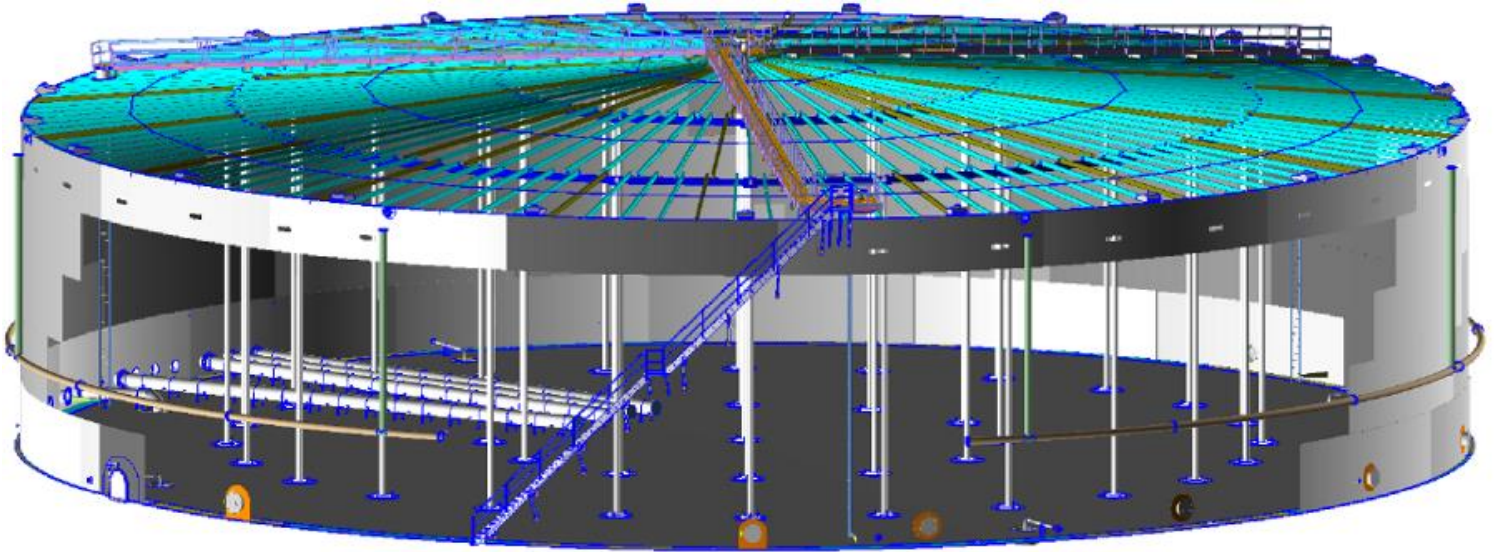
- Develop HSE Management Policies and Work Practices for implementation at all our workplaces.
- Fully abide by the local and international Safety & Security Directives
- Conduct employee awareness programs and ensure that they are committed to HSE management.
- Make line managers, officers, site supervisors and technicians accountable for HSE management.
- Encourage everyone to identify hazards, assess risks and eliminate potential threats.
- Ensure that all our employees are familiarized with the HSE rules of the work sites.
- Ensure employees are provided with appropriate PPE at the work site.
- Conduct periodic site inspection to ensure safety at the work place.





DESCRIPTION OF PRODUCT & SERVICES

Design, Fabrication and Installation of Tanks





Design, Fabrication and Installation of Pressure Vessels

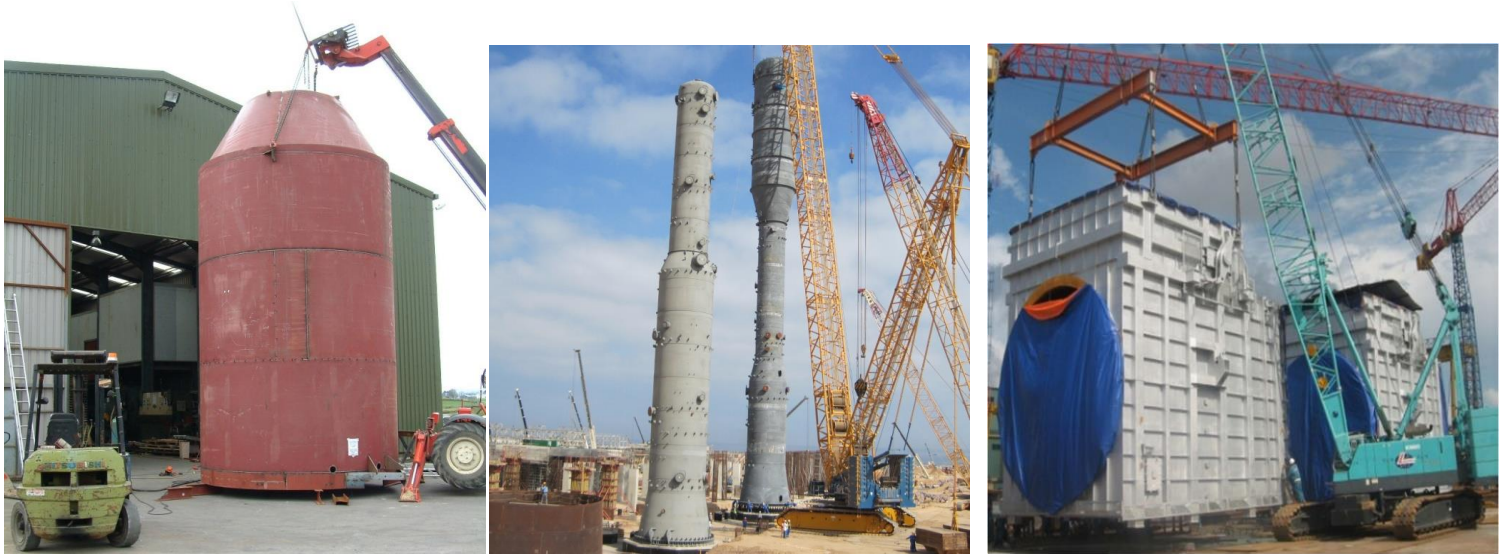


Design, Fabrication and Installation of Skids





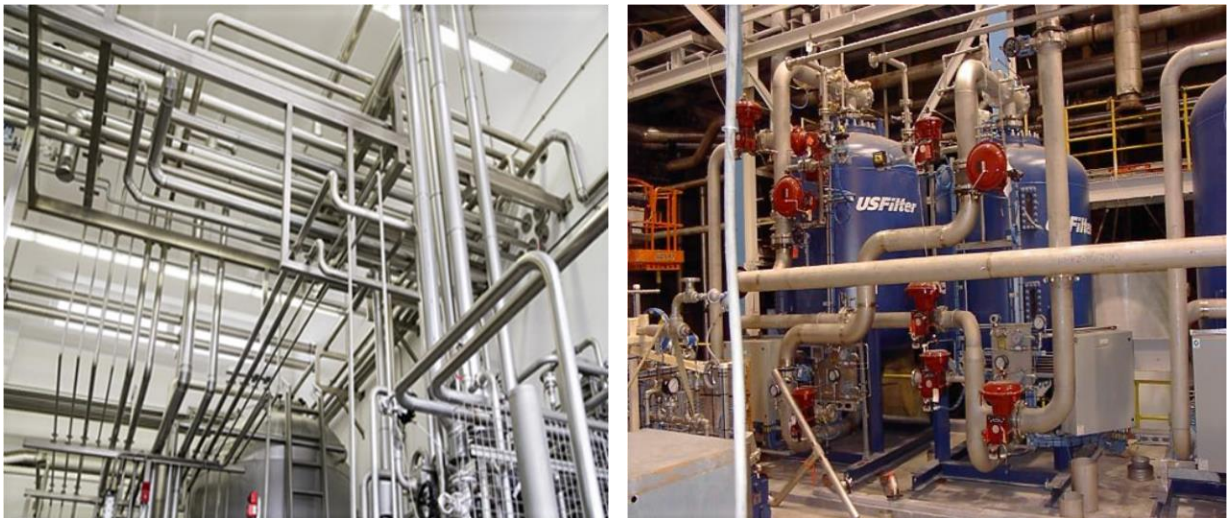
Silos Columns and Stacks.



Chutes, heat exchangers, and chimneys.



Plant Piping





Plasma Cutting (CNC) of

M S Plate up to 12.0m span x 64mm thick, S S Plate up to 50mm thick & Al Plate up to 50mm thick



Plasma Cutting and drilling (CNC) of

M S Plate up to 6.0m span x 64mm thick, S S Plate up to 50mm thick & Al Plate up to 50mm thick

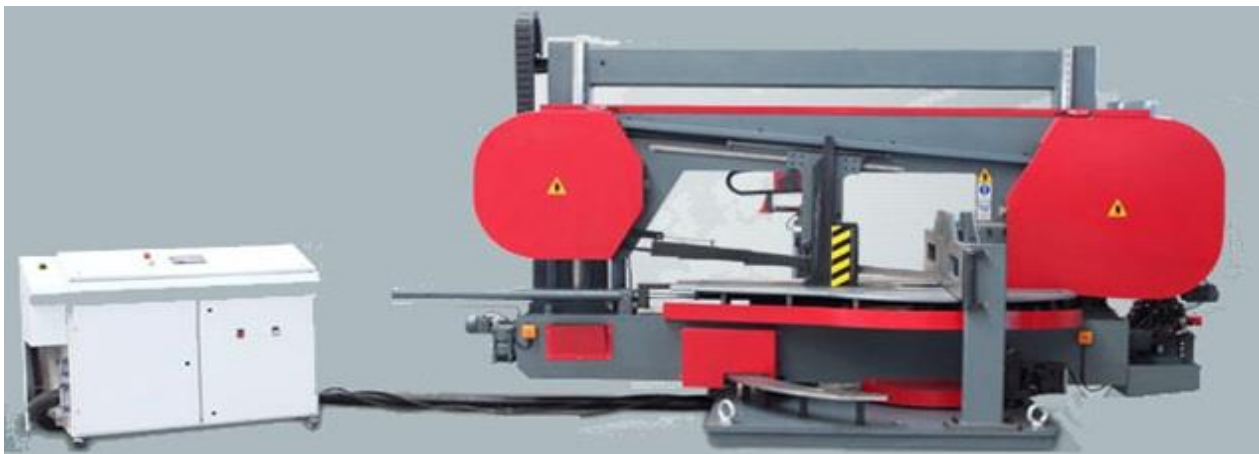
Drilling up to 50mm \varnothing





Beam Sawing and Drilling

Drilling marking and cutting of beams up to 1200mm (Web) x 500 mm (Flange) size.





Shearing of

M S Plate up to 3.0m span x 20mm thickness & S S Plate up to 3.0m span x 10mm thickness



Plate Bending with CNC Hydraulic Press Brake

M S Plate up to 3.0m span x 12mm thickness. & S S up to 3.0m span x 10mm thickness.





Rolling Works

Plates from min. diameter of 100mm onwards to any higher size up to a maximum thickness of 40mm.



Rolling of Pipes, Angles, Beams and Channels.



IRON WORKS-175 TON



Cutting, bending, punching, drilling of Plates, Angles, bars & Channels



Fabrication of Cones, Reducers and transition pieces.





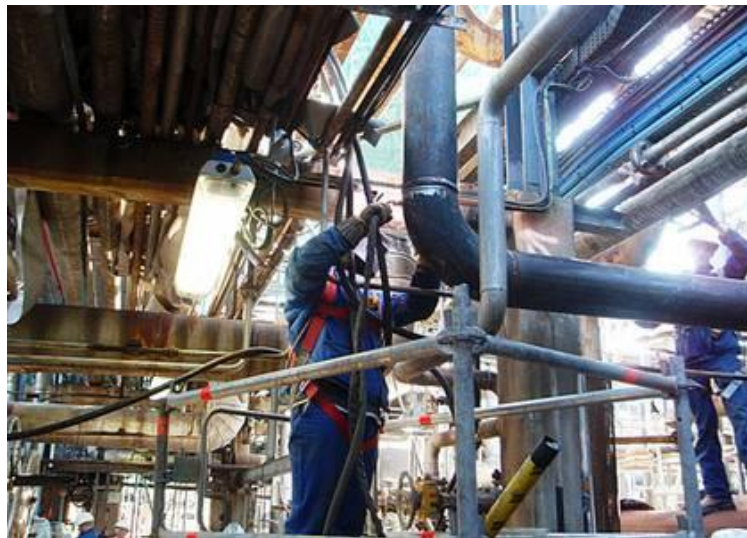
Punching and Press Works

Punching of Holes, Slots, all types of Clamps, Washers and formed segments.



All kind of Machining Jobs including Machining of Flanges up to 3m diameter.

Plant Shutdown and Maintenance works



**LIST OF TANK PROJECTS BY POWERTECH.**

SI	Job Description	Design & Detailing	MOC	Client & Year	User/ Project	Customer Contact	
						Name	Address
1	Water Storage Tank	By Client	A36	Samsung	Samco	Gin Sung An	P.O Box#35816, Al-Jubail-31961
	Cone Roof			May-11	Jubail	Site Manager	013-358 2241
2	Hoppers and Water Tank	By Client	A36	Al-Tuwairqi	MAC	Yasser Al-Obaidi	P.O Box# 1323, Dammam 31431
	Cone Roof			Sep-11	Ras Al-Khair	BDM	013- 812 3711
3	Water Tank	By Client	A36	Veolia	Hadeed	Mohd I Yasin	P.O Box# 3896, Dammam 31481
	Cone Roof			Sep-12	Jubail	Proj. Engineer	013- 898 3075
4	Waste Oil Tank -4 Nos	Detail by POWERTECH	A36	EDCO	EDCO	Kailas Pardeshi	P.O Box# 10183, Jubail 31961
	Cone Roof			Oct-12	Jubail	Supervisor	013- 367 0026
5	Fire Water Tank -6 Nos	By Client	A36	Samsung	SOCC AA	Chae Hoon Lim	P.O Box#35816, Al-Jubail-31961
	Cone Roof			Oct-12	Jubail	Site Manager	013- 358 0103
6	Water Tank	By Client	A36	TMSA	SWCC	Jayachandran	Jubail-31951
	Cone Roof			Nov-12	Jubail	DGM	013- 363 6971
7	Water Tank	By Client	A36	GS E&C	Sipchem	NK Lee	EVA plant and Utilities Project
	Dome Roof			Dec-12	Jubail	Const. Manager	051 - 517 7338
8	Jacketed Water Tank	Detail by POWERTECH	A36	EDCO	EDCO	Kailas Pardeshi	P.O Box# 10183, Jubail 31961
	Dome Roof			Mar-14	Jubail	Supervisor	013- 367 0026
9	Rotary Vacuum Drier	By Client	A36	Chemanol	Chemanol	B.T. Ninne	P.O Box# 2101, Jubail 31951
	Dome Roof			Apr-14	Jubail	Contract Admin.	013-343 8704
10	Water Tank	Detail by POWERTECH	A36	EDCO	EDCO	Kailas Pardeshi	P.O Box# 10183, Jubail 31961
	Dome Roof			Sep-14	Jubail	Supervisor	013- 367 0026
11	Steel Tanks - 10 Nos	By Client	A36	JMG	JMG	Sulaiman J	P.O Box# 4443, Jubail 31961
	Open			May-15	Jubail	GM	013- 340 7444
12	Water Tank -3 Nos	By Client	A36	Sinopec	MPC	Xie Baoqiang	P.O Box#2396, Al-Khobar-31952
	Cone Roof			Mar-16	Turaif	Proc. Manager	013- 881 2315
13	Waste Water Tank	By Client	A36	Jana	Jana	Mohd. Shameer	P.O Box:10661, Jubail-31961
	Cone Roof			Oct-16	Jubail	Proc. Officer	013- 358 5002
14	Resin Hoppers - 2 Nos	Design by POWERTECH	SS304	SATORP	SATORP	Hubert Head	Jubail 35741-7821
	Open			Nov-16	Jubail	Const. Head	013-356 9564
15	C.S Tanks - 14 Nos	Detail by POWERTECH	A36	GCIR	Gulf Chem.	Md. Shahadat	Dammam 2nd Ind Area
	Cone Roof			Apr-17	Dammam	Proj. Director	013- 812 1022
16	S.S Phenol Tank	Detail by POWERTECH	SS304	Moddecor	Moddecor	Rami	P.O Box# 11802, Jubail 31961
	Cone Roof			Jul-17	Jubail	Purch. Officer	013- 358 0000
17	C.S Water Tank	Detail by POWERTECH	A36	Chemanol	Chemanol	B.T. Ninne	P.O Box# 2101, Jubail 31951
	Dome Roof			Sep-17	Jubail	Contract Admin.	013-343 8704
18	Lime Silos-2 Nos	Design by POWERTECH	A36	Adv. Water	SWRO	Romeo Escobias	P.O Box:47282, Riyadh-11552
	Cone Roof			Oct-17	Khafji	Proc. Engineer	011-416 7407
19	C.S Water Tank	Design by POWERTECH	A36	Rezayat	RC	Mohammad B	P.O Box:10018, Jubail-31961
	Cone Roof			Oct-18	Jubail	Mech. Suprdnt.	013-341 9873
20	C.S Waste Oil Tank	Detail by POWERTECH	A36	Sabic	Saudi Kayan	AM Al-Qahtani	P.O Box:11115, Jubail-31961
	Cone Roof			Oct-18	Jubail	Buyer	013-350 6372
21	C.S Water Tanks- 2 Nos	Design by POWERTECH	A36	Multi Works	RC	Don Richmond	P.O Box:2765, Jubail-31951
	Cone Roof			Oct-18	RAK	Proc. Engineer	013-356 0076
22	C.S Diesel Tanks- 12 Nos	Design by POWERTECH	A36	Al-Kifah	Aramco	Ahmad Essa	P.O Box:7973, Dammam-31472
	Ellipsoidal Dish Heads			Jan-19	Tanajib	Proj. Engineer	013-845 2947
23	C.S Gasoline Tanks- 2 Nos	Design by POWERTECH	A36	Al-Kifah	Aramco	Ahmad Essa	P.O Box:7973, Dammam-31472
	Ellipsoidal Dish Heads			Jan-19	Tanajib	Proj. Engineer	013-845 2947
24	C.S Flush Water Tank	Design by POWERTECH	A36	Tekfen	Aramco	Bipin Rajan	P.O Box:2575, Al-Khobar-31952
	Cone Roof			Jan-19	Haradh	Proc. Officer	056-422 9602



LIST OF OTHER PROJECTS BY POWERTECH.

Client/Project	Description of Project	Status
Saudi International Petrochemical Co. (Sipchem)	Safety Concrete Barrier – Supply and installation	Completed
Eastern Cement Project thru' GAMA, Jubail	Steel Structure Erection Conveyor Bridge Erection	Completed
CHEMANOL	Installation of Jumbo Bagging Machine	Completed
Sahara	Fabrication and supply of HDG gratings	Completed
CHEMANOL	Yearly maintenance contract	Completed
Awal Cont, Jubail	Construction of Workshop & Office	Completed
Zamil SSD	Fabrication of Misc Steel Structure	Completed
Gas, SABIC thru' Samsung	Fabrication and supply of Misc Steel Structure	Completed
Samsung	Fabrication and supply of Misc Steel Structure for Tasnee, Jubail	Completed
JANA, Jubail	Fabrication and supply of SS wall projection liner	Completed
Saudi Aramco thru' RAWABI Electric	Fabrication & Supply of C.S Skid	Completed
United, SABIC thru' Linde Arabia Cont. Co.	Fabrication, HDG & Supply of pipe supports	Completed
RAWABI Specialized Enclosure	Fabrication & Supply of C.S Press Machine for sandwich panel	Completed
Ma'den through AM Cont	Fabrication of C.S Structure	Completed
SABIC and SASREF thru' KICL	Fabrication & Supply of SS clamps and J-bolt	Completed
Hadeed, SABIC thru' ABB, Jubail	Mechanical shutdown activities for finishing block drive replacement	Completed
RAWABI Specialized Enclosure	Fabrication & Supply of porta cabin structure	Completed
Saudi Aramco thru' RAWABI Specialized Enclosure	Fabrication & Supply of C.S Skid	Completed
SATORP thru' Cleveland Bridge	Fabrication of Misc. Steel Structure	Completed
Hadeed, SABIC thru' Zamil Cool Care	Sandblasting and painting of pipes	Completed
Royal Commission thru' KICL	Fabrication, supply & erection of steel structure	Completed
Royal Commission thru' KICL	Fabrication, Supply & Installation of handrails for Royal Commission	Completed



Hadeed, SABIC thru' Veolia Water	Design, fabrication, supply and installation of skid	Completed
Hadeed, SABIC thru' Zamil cool care	Fabrication of steel structure	Completed
Sipchem through GS	Fabrication of SS321 pipe spools	Completed
SABIC through Samsung	Design, Fabrication, Supply & Installation of steel structure	Completed
Sadara through L&T ATCO.	Fabrication of embedded plates	Completed
Ma'aden Aluminium Co.	Reduction tool and fabrication repair services	Completed
Royal Commission thru' KICL	Fabrication, supply & delivery of SS straps and J-bolts	Completed
Moddecor	Repair of Roof Structure	Completed
Tasnee	Fabrication and supply of Chemical hoses	Completed
Sadara through Fluor	Fabrication and supply of SS bird screen	Completed
EDCO	Fabrication and supply of CS jacketed tank	Completed
Chemanol	Repair of 4 vessels (RVD) during shutdown	Completed
Sadara through Fluor	Fabrication and supply of vortex breakers	Completed
Sadara through Fluor	Fabrication and supply of SS orifice plates	Completed
Sahara	Fabrication and supply of C.S blind flanges	Completed
Chemanol	Supply and installation of fire hydrants	Completed
Sadara through Fluor	Fabrication and supply of HDG wire mesh and frames	Completed
Chemanol	Fabrication and supply of platforms, handrail and ladder	Completed
Ma'aden Phosphate Co. through Sinopec	Detailed engineering of C.S ducting and tanks	Completed
Jubail Commercial Port through Dialog	Design, Supply, Fabrication and installation of CS water tank	Completed
Jubail Commercial Port through Dialog	Design, Supply, Fabrication and installation of CS Diesel tank	Completed
Sadara through Fluor	Fabrication and supply of SS spectacle blind	Completed
Chemanol	Fabrication, welding services and bucket elevator repair during shutdown	Completed
Sadara through Fluor	Fabrication and supply of C.S hand wheels	Completed
Royal Commission thru' KICL	Fabrication & supply of sign posts	Completed



Ma'aden Aluminium Company	Fabrication and supply of draft tube assembly	Completed
Jazan Water Network Project thru' JGC	Fabrication and supply of backing ring plates for tanks	Completed
Sadara through Sidem	Fabrication and supply of C.S pipe supports	Completed
Sadara through Fluor	Cold bending of SS pipes	Completed
Sadara through Sidem	Fabrication and supply of Weld Neck Flanges	Completed
Ma'aden Aluminium Company	Supply of CS seamless pipes	Completed
Oman Oil Refineries through Daelim	Detail Engineering, Fabrication, painting and supply of C.S platforms, handrails, ladders and gratings	Completed
Jubail Metal Galvanizing Co.Ltd	Detail Engineering, Fabrication, painting and supply of C.S Supports and Jigs	Completed
Chemanol	Design and modification of sprinkler piping system	Completed
Ma'aden Phosphate Co. through Delmonline	Fabrication and supply of C.S pipe supports	Completed
Royal Commission thru' KICL	Fabrication & supply of sign posts	Completed
IK Holding Company	Fabrication & supply of fire hydrants	Completed
Royal Commission thru' KICL	Fabrication & supply of C.S manhole cover	Completed
Ma'aden Aluminium Company	Fabrication, supply & installation of C.S pipe spools	Completed
Edco, Jubail	Fabrication & supply of C.S pipe spools	Completed
Ma'aden Umm Wu'al Phosphate Co.	Fabrication & supply of Steel Structure	Completed
Royal Commission thru' KICL	Fabrication & supply of sign posts	Completed
Sasref, Jubail	Fabrication & supply of Steel Structure	Completed
S-Chem through Dar Al-Riyadh.	Maintenance Services during Turnaround 2016	Completed
Ma'aden Phosphate Co. Jalamid	Fabrication & supply of Alloy Pins	Completed
Sasref, Jubail	Fabrication & supply of Steel Structure	Completed
Mrafiq thru' Al-Fatah Water & Power, Jeddah	Design, Fabrication, supply and erection of CS large dia pipe supports for Marafiq Project	Completed
Marafiq thru' Rawafid Industrial, Jeddah	Design, Fabrication, supply and erection of CS Pipe rack and saddles for Marafiq Project	Completed
BFG Commercial Services, Bahrain	Design, Fabrication, supply and erection of steel structure of GFRC panels for Madina Hajj City Project	Completed



Jubail Metal Galvanizing Co. Ltd	Detail Engineering, Fabrication, painting, supply and erection of SS Chimney and C.S ducting	Completed
Jubail Metal Galvanizing Co. Ltd	Detail Engineering, Fabrication, painting, supply and erection of platforms and supports	Completed
Saudi Aramco thru' GSW	Fabrication of C.S Skid	Completed
GSW, Jubail	Fabrication of Crane Girder	Completed
Gulf Ply, Dammam	Design, Fabrication, supply and supply of steel pipe spools	Completed
Marafiq thru' EPPM	Fabrication and supply of PST sludge collection drive wheels for SWTP9 Marafiq Project	Completed
Royal Commission thru' Sharqawi	Supply, fabrication & erection of C.S pipe rack for RC hospital	Completed
Gulf Ply, Dammam	Design, Fabrication, supply and SS Silos and Tanks	Ongoing
Royal Commission thru' Rezayat	Design, Supply, fabrication & erection of C.S water tank	Ongoing
Royal Commission thru' Ayuni	Design, Supply, fabrication & erection of C.S pipe rack	Ongoing
Sabic, Saudi Kayan	Supply, fabrication and erection of waste oil tank and associated works	Ongoing
Modacor, Jubail	Supply, fabrication and erection of SS Phenol tank	Ongoing
Royal Commission thru' Multiworks	Design, Supply, fabrication & erection of C.S water tank at RAK	Ongoing
Marafiq thru' EPPM	Supply, fabrication and erection of steel structure for TWTP8 Marafiq Project	Ongoing
Marafiq thru' EPPM	Supply, fabrication and erection of GRP pipe support for TWTP8 Marafiq Project	Ongoing
Aramco thru' Al-Kifah	Design, Supply and fabrication of CS Diesel Tanks for Tanajib Project	Ongoing
Aramco thru' Al-Kifah	Design, Supply and fabrication of CS Gasoline Tanks for Tanajib Project	Ongoing
Aramco thru' Tekfen	Design, Supply and fabrication of CS Flush Water Tanks for Haradh Project	Ongoing
SABIC through Mcdermott	Design, Fabrication & Supply of SS tanks- 6 Nos for United	Ongoing



MANPOWER LIST

STAFF MANPOWER LIST

Title	Number of employees
CEO	01
GENERAL MANAGER	02
TECHNICAL MANAGER	01
PRODUCTION MANAGER	01
ADMIN. MANAGER	01
BUSINESS DEVELOPMENT MANAGER	01
DESIGN MANAGER	01
FINANCE MANAGER	01
H.R MANAGER	01
QA/QC MANAGER	01
SAFETY MANAGER	01
PLANNING ENGINEERS	02
ESTIMATION ENGINEERS	03
QA/QC ENGINEERS	03
DESIGN ENGINEERS	03
PRODUCTION ENGINEERS	03
SITE ENGINEERS	06
SALES ENGINEERS	02
QA/QC INSPECTORS	03
WORKSHOP SUPERVISORS	04
LOGISTICS OFFICER	01
SITE SUPERVISORS	04
SAFETY OFFICERS	04
PURCHASE EXECUTIVES	02
ACCOUNTANTS	02
DOCUMENT CONTROLLERS	02
STORE KEEPERS	02
DRAUGHTSMAN	02
RECEPTIONIST	01
PUBLIC RELATIONS OFFICER	01


SKILLED MANPOWER LIST (DIRECT & INDIRECT)

Title	Number of Employees
STRUCTURAL FABRICATOR	16
TANK FABRICATOR/ ERECTOR	21
MULTI WELDER	19
6G WELDER	28
3G WELDER	18
CNC OPERATORS	6
MACHINE OPERATORS	6
MACHINIST/TURNERS	4
MANLIFT/FORKLIFT OPERATORS	6
CRANE OPERATORS	2
RIGGERS	6
INDUSTRIAL ELECTRICIAN	2
TACK WELDERS	22
PAINTER	8
SANDBLASTER	8
MILL WRIGHT	2
PERMIT RECEIVER	4
SCAFFOLDER	6
MECHANICAL HELPER	48
FIRE WATCH	6
MAN WATCH	4
SECURITY	3
DRIVERS	6



MACHINERY & EQUIPMENTS LIST

FABRICATION SHOP-Machinery & Equipment Summary

#	Machine Description	QTY	Technical Data
1	CNC plasma cutting machine	2	260A, 12M L X 3M W
2	CNC Beam drilling and sawing line	1	2DM, 1200 X 500mm
3	Hydraulic 4 roller NC plate bending machine	1	Rolling plate up to 50 mm thick. With 3 M L
4	Hydraulic NC Shearing Machine-Big	1	Plate Cutting 3M width x 16 mm thk
5	CNC Hydraulic Press Brake	1	Bending Plates Up to 3000mmx12mm Thk
6	Hydraulic iron worker	1	175MT
8	Hydraulic 3 roller NC plate bending machine	1	Rolling plate up to 10mmThick X 3000mm L
9	Hydraulic Profile Bending Machine	1	Rolling Section Up to 100mm (4" pipe)
10	Hydraulic Power Press-C Type	1	150 Ton
11	Workshop Press-H/Pillar Type	1	200 Ton
12	Hydraulic Power Press-C Type	1	50 Ton
13	Workshop Press-H/Pillar Type	1	150 Ton
14	3 roller plate bending machine	1	Rolling plate up to 5.5mmThk X 2250mm L
15	3 roller plate bending machine	1	Rolling plate up to 2.5mmThk X 1270mm L
16	Hydraulic Pipe Bending Machine	1	Rolling 3/8" to 4" Pipe Sizes
17	Radial Drilling machine	1	Up to 80 mmφ Holes
18	Radial Drilling machine	1	Up to 50 mmφ Holes
19	Column Drilling Machine	3	Up to 40mmφ Holes
20	Magnetic drilling machine	2	Up to 100mmφ Holes
21	Magnetic drilling machine	3	Up to 32mmφ Holes
22	Center Lathes-Extra Heavy Duty	1	3000mm φ X 3000 mm L
23	Center Lathes-All Geared	2	1180mm φ X 3000 mm L
24	Center Lathes-All Geared	3	820mm φ X 2000 mm L



25	Universal Vertical Milling Machine	2	Table Size-330X1525 mm
26	Shaping Machine	1	36"
27	Thread Cutting Machine	1	From 1/2" to 2"
28	Marking Machine	1	Up to 1mm deep
29	Pipe beveling machine	1	Up to 24" pipe
30	Portable Automatic Gas Cutting Machine	5	Plate up to 200 mm thk. with 800 mm/min
31	Portable Plasma Cutting Machine	2	Plate up to 38 mm thk.
32	Manual Punching Machine	4	Punching 100 Ton
33	Multi Process Rectifier Welding Machine	85	500A
34	Portable STICK/TIG Welding Machine	20	280A
35	MIG Welding Machine	12	400A
36	Multi Process Diesel Welding Machine	30	400A
37	Baking Welding Oven	3	65-288°C(150-550°F), 240Kg
38	Holding Welding Oven	3	65-288°C(150-550°F), 240Kg
39	Portable Welding Oven	102	149°C(300°F),5kg
40	Airless spray painting unit	3	56:1
41	Portable diesel engine driven air compressor	3	9-11 bar, 450CFM
42	Air Compressors	5	200L
43	Sandblasting Equipment	3	200 L X12 Bar
44	Over head crane	1	5 Ton
45	Over head crane	1	10 Ton
46	Forklift	4	4 Ton
47	Forklift	4	3 Ton
48	Pickup Trucks	4	2 Ton
49	Heavy Duty Trucks	3	5 Ton
50	Trailer	2	35 Ton



Site Work-Machinery & Equipment List

No	Machine Description	QTY	Technical Data
1	Oxy-Acetylene Gas Cutting Set	22	Cutting plate up to 200mm thk.
2	Portable Cutting Machine-14"	6	Section Cutting 5mm thk
3	Metal Cutting Band Saw	5	Cutting Round Bar Up to 180mmφ
4	Portable Plasma Cutting Machine	5	SS Plate Cutting up to 40mm thk
5	Angle Grinders-Heavy Duty-4.5"	128	10000 RPM
6	Angle Grinders-Heavy Duty-7"	38	8500 RPM
7	Power Generator	4	500 KVA
8	Pencil(Die) Grinders-1/4"	38	6 mm Capacity
9	Portable Welding Generator	42	450 A
10	Automatic Tank Welding Machine	2	400 A
11	Portable Welding Oven	58	149°C(300°F),5kg
12	Pipe End Milling Machine	3	1" to 36"
13	Hand Operated Workshop Press-H/Pillar Type	1	200 Ton
14	Magnetic Drilling Machine	2	Up to 100mm Cutter & Drill up to 32 mm
15	Thread Cutting Machine	4	From 1/2" to 2"
16	Portable Diesel Air Compressors	3	450 CFM
17	Jack Hammer	8	2-5 Ton
18	Forklift	1	8 Ton
19	Forklift	3	3 Ton
20	Mobile Crane	2	150 Ton
21	Mobile Crane	4	50 Ton





Inspection Equipment List

#	Item	Quantity
1	Outside Micrometer	18
2	Inside Micrometer	4
3	Digital Dew Point Meter	6
4	Vernier Caliper	35
5	Thread Gauge	5
6	Coating Thickness Gauge (Digital)	4
7	Pressure Gauge	24
8	Bridge Cam Welding Gauge	4
9	Fillet Weld Gauge	4
10	Keane Tator Surface Profile Comparator	3
11	Digital Temperature Gauge (-50 ⁰ C to 1000 ⁰ C)	3
12	Hardness Tester	2
13	Vernier Height Gauge	2
14	Vernier Depth Gauge	2
15	Radius Gauge	8
16	Digital Outside Micrometer	2
17	Dial gauge (Propattas)	2
18	Depth Micrometer	2
19	Hardness Tester	1
20	Dial Micrometer	2
21	High Voltage Holiday Detector	2
22	Nozzle Pressure Gauge Kit	2
23	Combination Set	2
24	Salt Contamination Test Kit	1



FACILITY AREA

Size of Fabrication Area and Office

Covered Fabrication Shop	5,600 M²
Open yard	8,920 M²
Total Office Floor Area (Total of 3 floors)	1440 M²
<i>Total facility Area</i>	<u>15,000 M²</u>



MAJOR CLIENTS





LIST OF VENDOR REGISTRATION WITH MAJOR CLIENTS

SL	CLIENT NAME	VENDOR NUMBER
1	ARAMCO	10060239
2	SABIC	506172
3	ROYAL COMMISSION	RCJ 000310
4	MAADEN ALUMINUM	12911
5	MAADEN PHOSPHATE	12911
6	SATORP	11523
7	SASREF	1002718
8	SIPCHEM	103132
9	TASNEE	103135
10	SAHARA PETROCHEMICAL	101141
11	CHEMANOL	3254
12	JANA	102643
13	EASTERN CEMENT	10983
14	FARABI PETROCHEMICALS	103092



Saudi Arabian Oil Company
Supplier Relationship Management
B-102 North Park 2
Dhahran 31311
Saudi Arabia

Tel.: (966 13) 874-0958
Fax: (966 13) 874-1495

أرامكو السعودية
saudi aramco



August 5, 2018

SRQU-066-18

ABDULLAH S. AL-SEKHAN, CEO
POWER TECH. FOR METAL FABRICATIONS
P.O. BOX 11983
JUBAIL 31961

Fax 013 342 1050

Mr. Al-Sekhan,

We are pleased to inform you that your company is now included in the Saudi Aramco Supplier Information System under Vendor Code No. **10060239**, Plant No. **30007186** for the following products provided your company continues to meet relevant Saudi Arabian and Saudi Aramco standards.

9COM	Description
6000002479	TANK; SHOP FABRICATED; 32-SAMSS-030;
6000000663	STRUCTURE; STEEL
6000000517	RAIL; STAIRCASE RAILING;
6000003103	PLATE; NAME; IDENTIFICATION; PLASTIC; BL
6000009260	SERVICE: CLADDING, METAL;
6000000596	ANCHOR
6000001676	TROLLEY
6000003117	RACK; STORAGE; PALLET AND DRUM;

This approval, however, should not be construed as a commitment by Saudi Aramco to purchase from you. Being approved as a supplier only grant your company the opportunity, along with other approved sources, to respond to requests for submitting proposals in accordance with Saudi Aramco's established policies and procedures. All purchase agreements and orders will be issued based on the name and address stated in your commercial registration (CR), as stated above.

Saudi Aramco wishes to remind you that being recognized as a potential supplier is a privilege which carries with it serious obligations and responsibilities to act in a legal and ethical manner. We wish to remind you of the Saudi Aramco Supplier Code of Conduct (SCOC) which you acknowledged. Failure to abide by the principles set forth in the SCOC can result in adverse actions being taken by Saudi Aramco against you including suspension of you as a supplier. Saudi Aramco also expects each of its suppliers to satisfy each of the requirements of any purchase agreements or orders which might be placed and to act responsibly and reliably as a supply chain supplier.



Saudi Arabian Oil Company
Supplier Relationship Management
B-102 North Park 2
Dhahran 31311
Saudi Arabia

Tel.: (966 13) 874-0958
Fax: (966 13) 874-1495

أرامكو السعودية
saudi aramco



SRQU-066-18

Please note that evidence of representation from your supply source(s) must be supported by letter(s) of confirmation stipulating the territorial coverage and specific product lines involved. Your supply sources must have been accepted as qualified suppliers of the range of materials that you wish to supply. It is also important that you advise us immediately of any changes in the agreements which you have negotiated with your supply sources and/or any changes in your contact information such as postal address, telephone and fax numbers.

Suppliers should apply for Saudi Aramco Supplier Portal access by forwarding a request to portal-registration@aramco.com. The Supplier Portal is the main electronic business tool used between Saudi Aramco and its suppliers and serves to improve the flow and accuracy of key supply chain information.

Should you have any questions, please call Ahmed A. AlRammah on 874-0042.

 8/6/2018

Adnan A. Jaman, (A), Supervisor
Supplier Registration & Qualification Unit

It is the responsibility of the supplier to notify Saudi Aramco Supplier Relations Management Unit of the following:

1. Change of Name/ Address/ Owner(s)
2. Any change of the supplier location (sub sourcing fabrication of major components)
3. Discontinue of fabrication or supply of approved commodities (9COMs, 9CATS and/or MSGs)



RECOGNITION/APPRECIATION CERTIFICATES

Certificate of Membership



American Welding Society®

By authority of the Board of Directors

Power Tech for Metal Fabrications (PT-Steel)

is hereby designated

Supporting Company Member

August 2014

of the American Welding Society, founded in 1919 to advance the science, technology and application of welding and allied joining and cutting processes worldwide, including brazing, soldering, and thermal spraying.

Alan R Wilson

AWS PRESIDENT



Raymond M. ...

EXECUTIVE DIRECTOR



Certificate No.: 037



PROVISIONAL ACCEPTANCE CERTIFICATE OF COMPLETION

SUPPLY & FABRICATION OF SS RESIN BACK WASH
HOPPER

PO No.: 4200001360




MOC No.: MOCC-52-1909

Contractor: PT-STEEL

Completion Date: 04th January 2017

THIS CERTIFICATE HEREBY CERTIFIES THAT ALL WORKS HAVE BEEN MECHANICALLY COMPLETED AND PROVISIONALLY
ACCEPTED IN ACCORDANCE WITH THE PROVISIONS OF THE CONTRACT.

ISSUANCE OF THIS PROVISIONAL ACCEPTANCE CERTIFICATE OF COMPLETION SHALL NOT RELIEVE CONTRACTOR FROM HIS WARRANTY OBLIGATIONS AND
OTHER PROVISIONS OF THE CONTRACT.

Contractor	Business Team/Area Owner	Project Superintendent
Signature:  Name: Pramod K.P.	 Paresch Kakodia	 MohdSoji Bin Omar
Department/Company: PT-STEEL	Business Team Area 7, Operation Department	Project Division, Technical Dept.
Date: 4-01-2017	11 th Jan 2017	17/01/17



SAMSUNG SAUDI ARABIA COMPANY LIMITED

C.R. 2055014964

Paid Capital: SAR 10,000,000.00



شركة سامسونج العربية السعودية المحدودة

سجل تجاري: ٢٠٥٥٠١٤٩٦٤

رأس المال المدفوع: ١٠,٠٠٠,٠٠٠ ريال سعودي


CERTIFICATE OF APPRECIATION

This is to certify that M/S. Power Tech for Metal fabrications was a subcontractor for steel fabrication and installation jobs in Saudi Organometallic Chemicals Company (SOCC) AA Project, Jubail Industrial City, Kingdom of Saudi Arabia.

Samsung Saudi Arabia Co. Ltd, the main contractor of the above mentioned project, hereby certifies that during the above mentioned project, Power Tech for Metal fabrication's performance has been extremely satisfactory.

This certification has been issued for the appreciation of their performance and contribution extended towards the successful completion of the SOCC project.

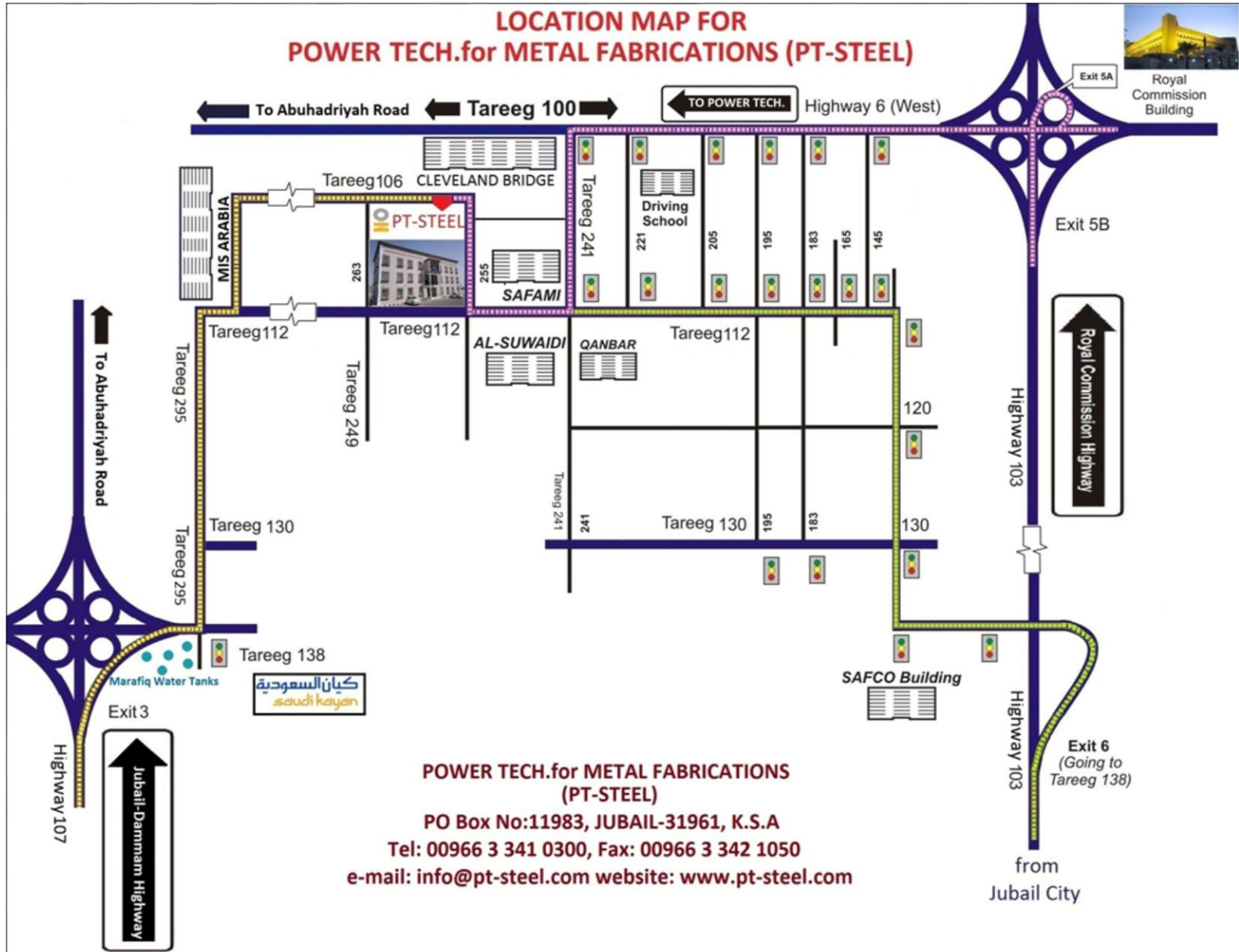
For and on behalf of
Samsung Saudi Arabia Co. Ltd


Jae Yeon Kim
Project Manager *1-1-2013*





LOCATION MAP



Old Jubail



SOME PROJECT PHOTOS





















OUR FACILITY



POWERTECH is situated in Jubail Industrial City, 3rd support industrial area, total facility area of 15,000 Sq. M



Total covered workshop area of 5000 Sq. M



OUR CONTACT

P.O Box No: 11983
Jubail Industrial City-31961
Kingdom of Saudi Arabia
Tel: 00966 13 341 0300
Fax: 00966 13 342 1050
E-mail: info@pt-steel.com
Website: www.pt-steel.com